

POLY

ENTERPRISES

Fencing, Railings, Decks & Arbors



POOL FENCING BROCHURE

VISIT OUR SHOWROOM

**3329 SOUTHSIDE RD
FRANKFORT, NY**

VISIT US ONLINE:
WWW.POLYENTERPRISES.NET

CALL US!
(315) 843-4049

COMPANY HISTORY

Established in 2007, Poly Enterprises grew out of the need for a local fence company specializing in vinyl and aluminum fencing. Further, we understood that many customers were unable to find a local company which could not only provide premium fencing, and pool fencing, but which would provide the peace of mind of a seamless installation process and unmatched service.

By maintaining our core values, integrity, and offering the best possible products with unmatched professional service we have maintained constant growth even during a difficult economic environment. We understand that our success is made possible by our customers trust in our ability to fulfill their complete expectations on every project. This guides Poly Enterprises commitment to becoming an integral part of our local communities.

OUR VISION

Through our commitment to customer satisfaction, a professional working environment and attention to detail. We will become the most trusted and respected pool fencing, decking, pergola and railing company in central New York. Community involvement, provide stable, well paying employment and environmentally friendly initiatives will enable us to provide constant growth, development and innovation which will direct our company and staff to continued excellence.



MEET THE TEAM

PHOTOS
COMING SOON

BRIEF SUMMARY

NEW YORK STATE POOL CODE

- >> The barrier must completely surround the swimming pool and must obstruct access to the swimming pool.
- >> The barrier must be at least 4 feet (48 inches) high.
- >> The space between the bottom of the barrier and the ground cannot exceed 2 inches.
- >> Any opening in the barrier must be small enough to prevent the passage of a 4-inch-diameter sphere through the opening
- >> If the barrier is composed of horizontal and vertical members and the distance between the tops of the horizontal members is less than 45 inches, the spacing between vertical members can't exceed 1.75 inches. If the distance between horizontal members is 45 inches or more, the spacing between vertical members can't exceed 4 inches.
- >> A building wall can form part of the required barrier
- >> All gates must be self-closing.
- >> If the gate is a pedestrian access gate, the gate must open outward, away from the pool.
- >> All gates shall be self-latching, with the latch handle located at least 54 inches above grade.

NOTE for reference only, please see refer to references below and your local codes department for complete and current codes :

www.health.ny.gov/regulations/nycrr/title_10/part_6/subpart_6-1.htm#s6116

www.poolsafely.gov/wp-content/uploads/2016/04/Safety-Barrier-Guidelines-for-Residential-Pools.pdf

www.dos.ny.gov/dcea/currpoolreq.htm



PLANNING AND DESIGN PHASE

• Location of pool and fence?

- Fence around pool
- Fence entire yard
- Fence attached to house
- Fence attached to deck and or railing (see pool code below)

• General layout of the fence?

• Location of Slide?

• Will there be a Pool House and its location?

• Location of Pool Equipment?

Diving Board?

Gate Locations, Style and Size?

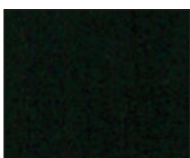
Pool installation process?

- Installation of pool
- Rough grading
- Installation of concrete or hardscape
- Rough landscaping inside fenced area
- Installation of pool fencing
- Final landscaping and or concrete/ hardscapes

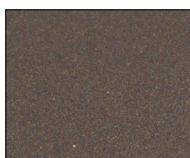


COLORS

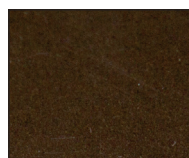
Popular colors are shown below. All colors are Verified AAMA 2604 Compliant and we offer an option to upgrade to a verified AAMA 2605 Compliant powder coating finish. Colors shown are a close representation of the true color. Please contact us for samples for accurate powder coating colors.



Satin Black



Bronze Fine Texture



Ninety Bronze



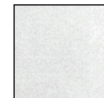
Black Fine Texture



Sandy Shore



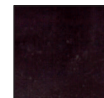
Gloss Beige



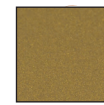
White Fine Texture



Gloss White



Chocolate



Gold



Clay



Speckled Walnut

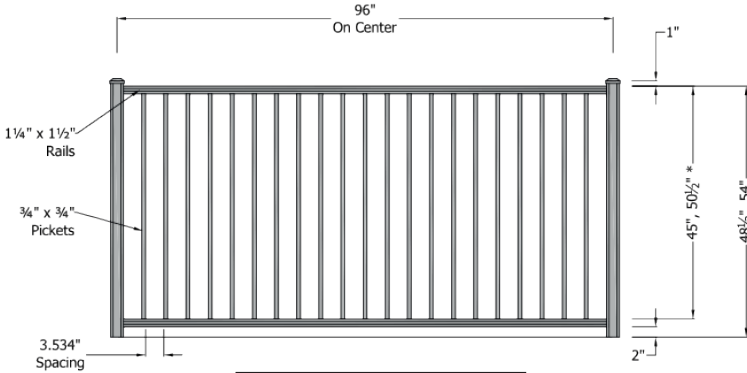


Silver

ALUMINUM FENCING

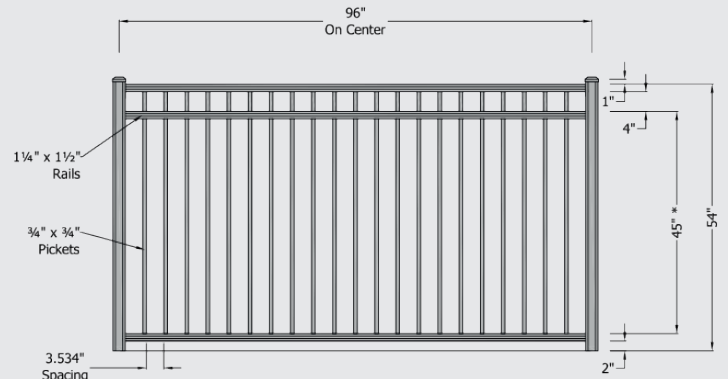
Regis 4000 Series Commercial Aluminum Fencing

The Commercial (4000 Series Routed) System features $\frac{3}{4}$ " pickets, $1\frac{1}{4}$ " x $1\frac{1}{2}$ " rails and standard $2\frac{1}{2}$ " post. This system utilizes hidden picket fasteners and routed posts to create a screwless system. Distinct features of the Commercial (4000 Series) are the unique rail design and beautiful recessed posts. AAMA 2604 Powder Coated, Lifetime Warranty.



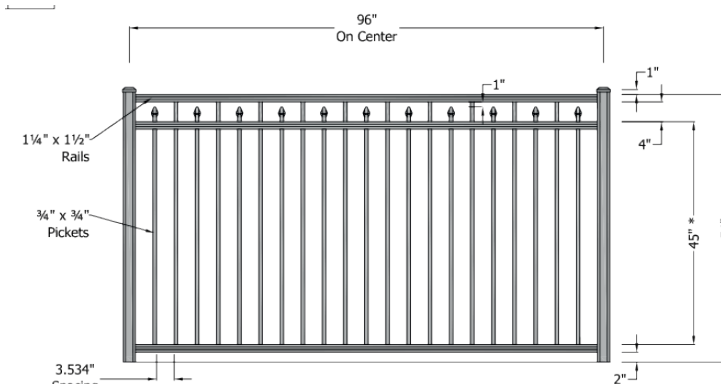
POST SIZE	
48 1/2" Tall	2 1/2" x 2 1/2" x 78"
54" Tall	2 1/2" x 2 1/2" x 7"

STYLE 4220



POST SIZE	
48 1/2" Tall	2 1/2" x 2 1/2" x 84"
54" Tall	2 1/2" x 2 1/2" x 7"

STYLE 4230



POST SIZE	
48 1/2" Tall	2 1/2" x 2 1/2" x 84"
54" Tall	2 1/2" x 2 1/2" x 7"

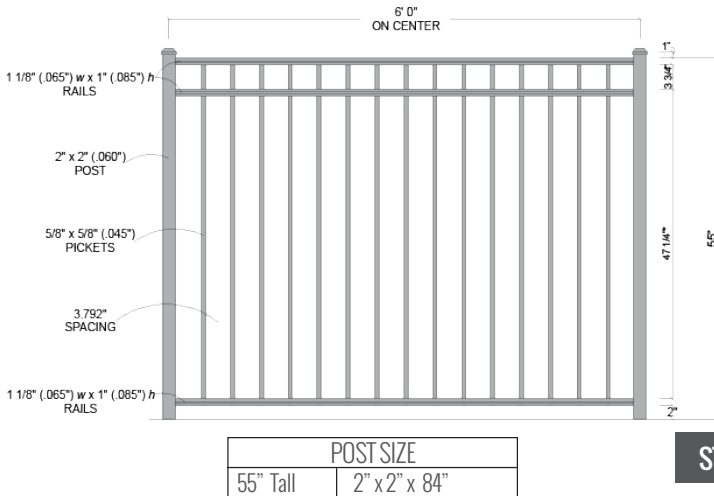
STYLE 4233



ALUMINUM FENCING

Regis 3000 Series Residential Aluminum Fencing

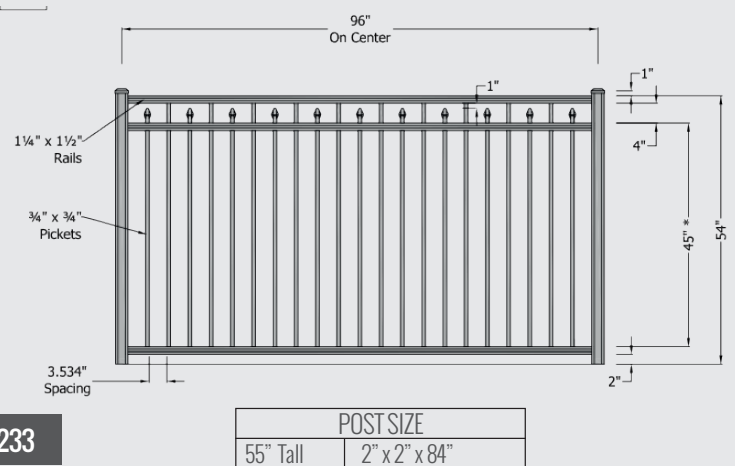
The Residential (3000 Series Routed) System features $\frac{5}{8}$ " pickets, $1\frac{1}{8}$ " x 1" rails and standard 2" post. This system utilizes hidden picket fasteners and routed posts to create a screwless system. Distinct features of the Commercial (3000 Series) are the unique rail design and beautiful recessed posts. AAMA 2604 Powder Coated, Lifetime Warranty.



STYLE 3230

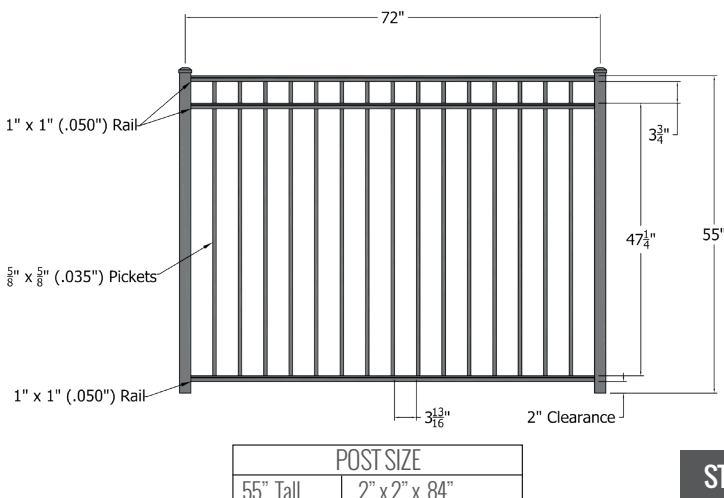


STYLE 3233



Regis 6000 Series Residential Aluminum Fencing

ECONOMY FENCING



STYLE 6230

The Regis® 6000 Series Ornamental Aluminum Fencing is a perfect addition to any residence. Whether your customers are looking for the security of a backyard fence or a design element for landscaping, the Regis® 6000 Series provides an economical option while offering the quality you expect from the Regis® fence line of products.



POST SIZES



4" (Common for gate post for both 4000 and 3000 Series)



2.5" (Common line post for 4000 series as well as gate post for both 3000 and 4000 series)



2" (Common for both 3000 series line post)

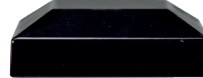
CAP STYLES



2" (Flat and Ball)



2.5" (Ball)

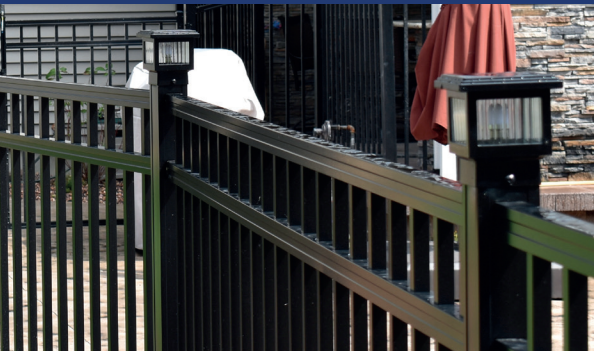


2.5" (Flat)



4" (Flat and Ball)

LIGHTS



DSI. Magena Star low voltage outdoor lighting Available in wired or solar options able to fit 2", 2.5" and 4" post sizes



GATE STYLES

All gates available in 36", 48", 60" and 72" widths also with the option as double gates, and for use in both 4000 and 3000 series



FLAT TOP

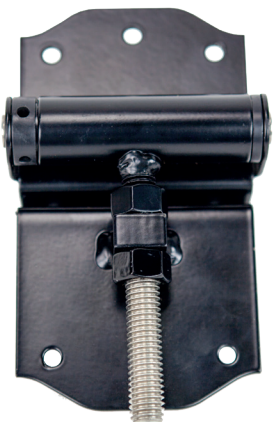


ARCHED TOP



DESIGNER ARCH TOP

GATE HARDWARE



Stainless steel self-closing hinges



MagnaLatch Series 3 Top Pull & Vertical Pull.
Magnetic Safety Gate Latch
The world's most trusted safety gate pool latch



LokkLatch MAGNETIC push and pull handle version

VINYL FENCING

Greenway Vinyl Fencing

Greenway Vinyl Fencing utilizes a higher density PVC allowing added strength and flexibility. The pre-routed holes for the rails and pickets are designed as a floating system which allows for expansion and contraction without the breaks and cracks that come with generic PVC Fencing. There is an included Lifetime Warranty for added insurance and reliability.



HERKIMER CONCAVE, 58"



COLUMBIA, 48"

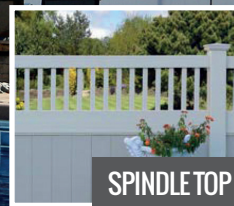


FULTON, 72"

ACCENTS



LATTICE TOP



SPINDLE TOP



SPEAR TOP

COLORS



White



Tan



Clay



Gray

CUSTOMER CHECKLIST



INITIAL PLANNING PHASE

- Property Line Locations and Surveys?
- Zoning and Local Codes?
- Building Permits?
- Private Underground Utilities?
- Site Access

DESIGN PHASE

- What purpose will the fence serve? Privacy? Keeping kids or pets in? Pool Fence?
- Fence material? Vinyl, aluminum, chain link, wood?
- Fence Height?
- Color of Fence?
- Gates and Gate Width?

- Gates Hardware?
- Fence style? Fence layout?

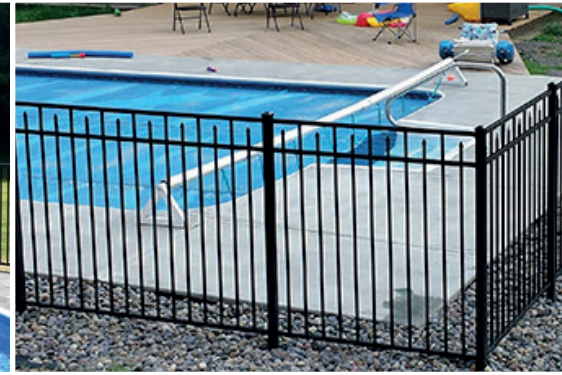
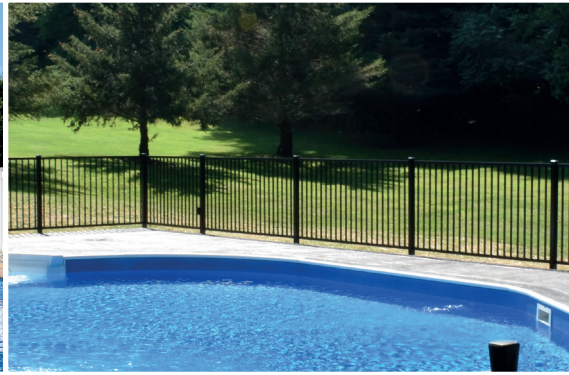
WHY CHOOSE POLY ENTERPRISES

- 5 year labor warranty***
- Lifetime material warranty (vinyl & aluminum)
- Office and showroom
- Professionally trained installation crews
- Largest and most trusted local residential fence company located in the Mohawk Valley
- Family owned and operated
- Fully insured
- 100% customer satisfaction guaranteed
- Customer referrals available
- Standard 36" below grade concrete fence post footers

- Routed aluminum and vinyl fence systems eliminating unsightly exposed fasteners.
- Premium fence materials used for every fence install.

QUESTIONS TO ASK YOUR DECK CONTRACTOR

- Warranty?
- Showroom/Display/Office?
- Company reviews online?
- Referrals?
- Insurance?
- Quality of Material used?



POLY 
ENTERPRISES

Fencing, Railings, Decks & Arbors

(315) 843-4049 | www.polyenterprises.net

To find inspiration for your home go to our website to view our updated project gallery. We've got plenty of tips on deck maintenance and product selection in our blog too, and we're updating when we can: when we're not building decks, that is.

We're really proud of our service, and our people. If you have any questions, please don't hesitate to contact us. We look forward to hearing from you!

Follow us   Review us 

