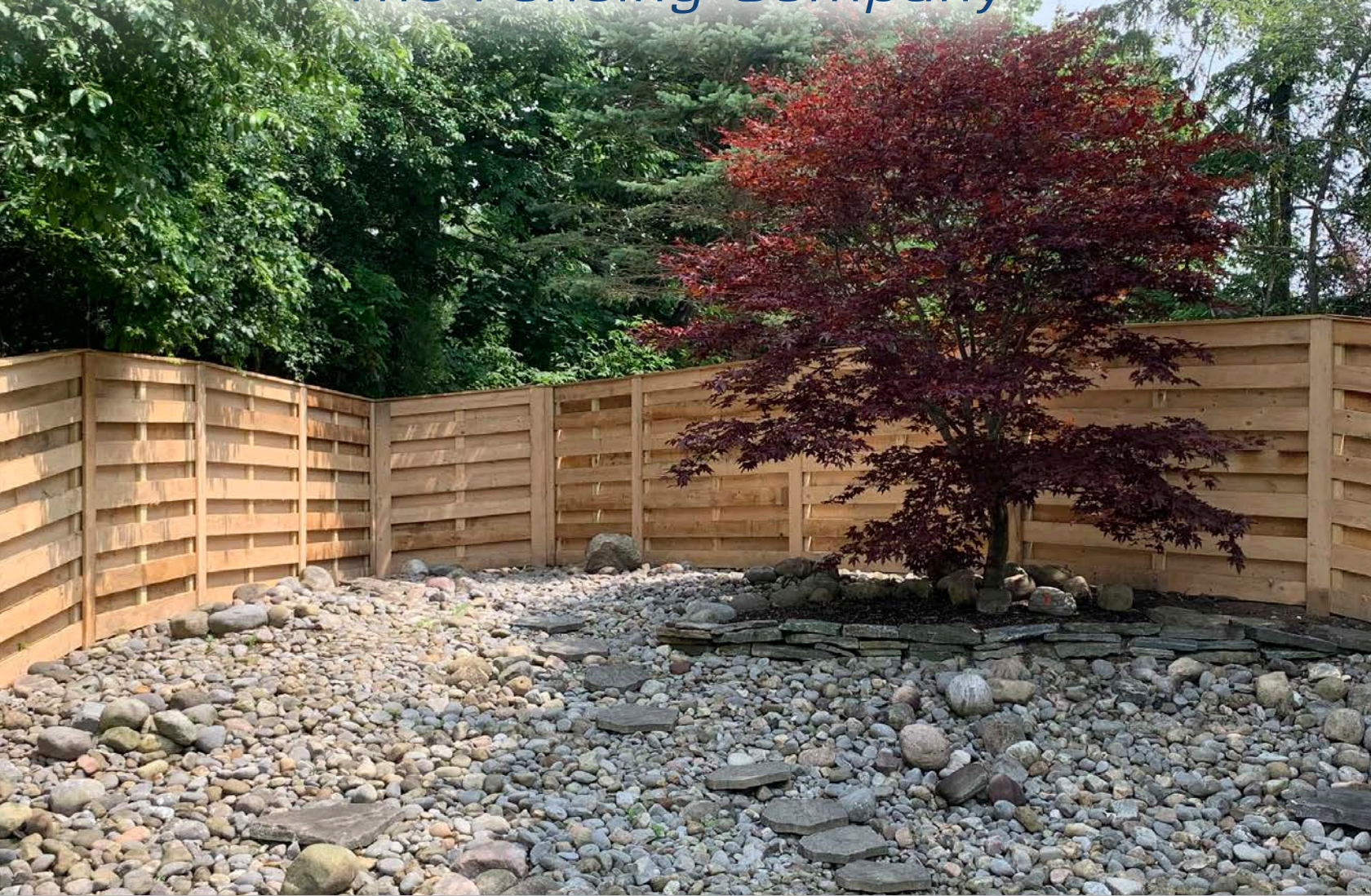




POLY ENTERPRISES

The Fencing Company



WOOD FENCING BROCHURE

VISIT OUR SHOWROOM

3329 SOUTHSIDE RD
FRANKFORT, NY

VISIT US ONLINE:
WWW.POLYENTERPRISES.NET

CALL US!
(315) 843-4049

COMPANY HISTORY

Established in 2007, Poly Enterprises grew out of the need for a local fence company specializing in vinyl and aluminum fencing. Further, we understood that many customers were unable to find a local company which could not only provide premium fencing, and pool fencing, but which would provide the peace of mind of a seamless installation process and unmatched service.

By maintaining our core values, integrity, and offering the best possible products with unmatched professional service we have maintained constant growth even during a difficult economic environment. We understand that our success is made possible by our customers trust in our ability to fulfill their complete expectations on every project. This guides Poly Enterprises commitment to becoming an integral part of our local communities.



OUR VISION

Through our commitment to customer satisfaction, a professional working environment and attention to detail...

We will become the most trusted and respected pool fencing, decking, pergola and railing company in Central New York. Community involvement, providing stable, well paying employment and environmentally friendly initiatives will enable us to provide constant growth, development and innovation which will direct our company and staff to continued excellence.



A FAMILY OF BUSINESSES



315-368-5593
guttertechenterprise.com



315-574-2496
cariboudecks.com



WOOD PRIVACY FENCING

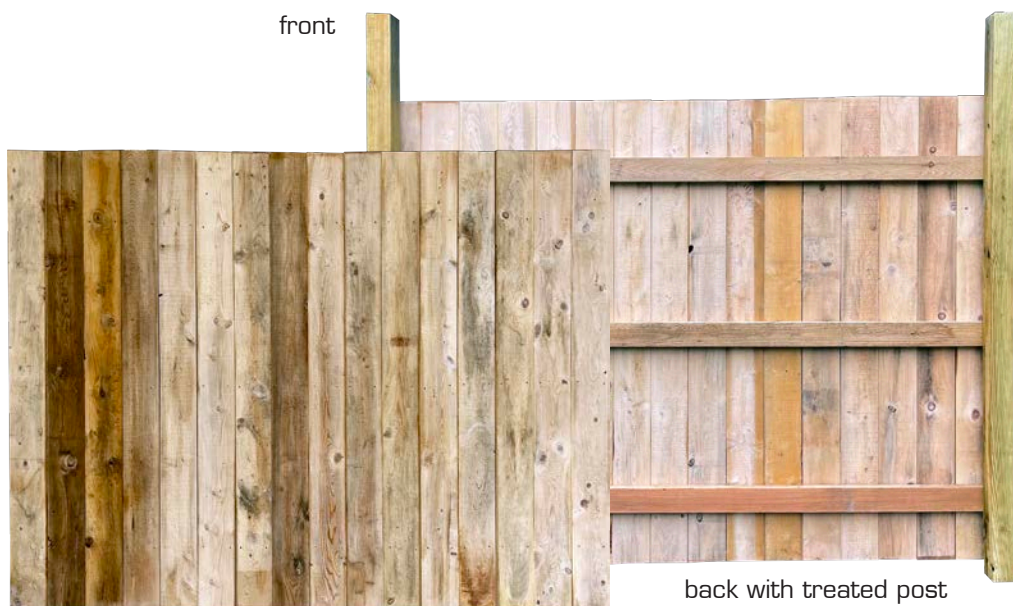


front

back with treated post

TREATED WOOD FULL PRIVACY

- 72" High plus Standard 2" off grade
- Treated Pickets are $\frac{3}{4}$ " x 5 $\frac{1}{2}$ " x 72"
- Treated 2" x 4" x 8' Rails
- Treated 4" x 4" Post



front

back with treated post

HEMLOCK WOOD FULL PRIVACY

- 72" High plus standard 2" off grade
- Hemlock Pickets are 1" x 6" x 72"
- Cedar Rails 2" x 4" x 8" Rails
- Treated 4" x 4" Post



front

back

CEDAR PRIVACY WITH CONCAVE TOP

- 72" high plus Standard 2" off grade
- Cedar Pickets $\frac{5}{8}$ " x 6" x 72"
- Cedar Rails 2" x 4" x 8"
- Treated True 4" x 4" Post with Gothic Top

WOOD PRIVACY

HORIZONTAL FENCING



front

back

HORIZONTAL HEMLOCK FULL PRIVACY

- 72" high plus Standard 2" off grade
- Hemlock Pickets 1" x 6" x 96" (Horizontal)
- Treated True 4" x 4" Post
- 1" x 6" Cap and Trim



front

back

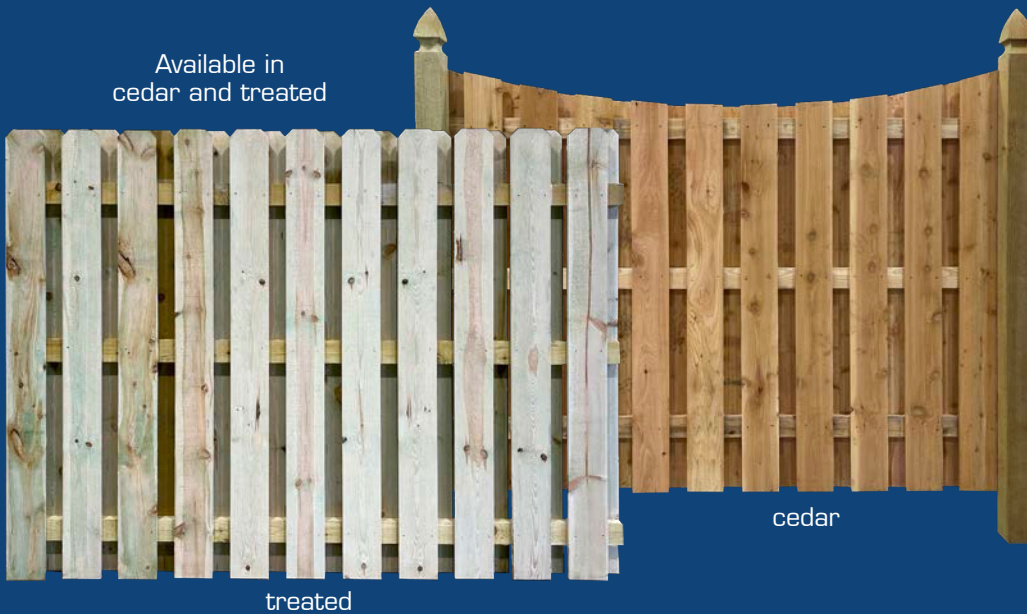
HORIZONTAL HEMLOCK SHADOWBOX FULL PRIVACY

- 72" high plus Standard 2" off grade
- Hemlock Pickets 1" x 6" x 96" with offset spacing back and forth
- Treated 2" x 4" x 96" Support Rails
- Treated True 4" x 4" Post
- 1" x 6" Cap and Trim

WOOD SEMI-PRIVACY FENCING



Available in
cedar and treated



TREATED WOOD SHADOWBOX PRIVACY

- 72" high plus Standard 2" off grade
- Treated or Cedar Pickets 6" x 72" with offset spacing back and forth
- Treated or Cedar Rails 2" x 4" x 96"
- Treated True 4" x 4" Post with Gothic Top



CEDAR PRIVACY WITH LATTICE TOP

- 72" high plus Standard 2" off grade
- 12" Lattice Top Height
- Cedar Pickets 5/8"x 6" x 60"
- Cedar Rails 2" x 4" x 8"
- Treated True 4" x 4" Post

WOOD YARD FENCING



SPACED HORIZONTAL HEMLOCK WITH CAP & TRIM

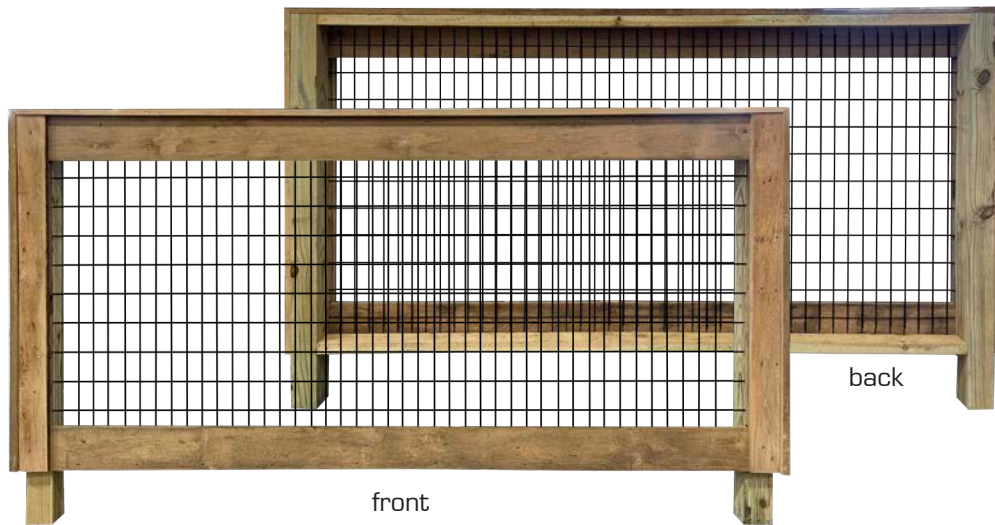
- 48" Plus Standard 2" off grade
- Hemlock Pickets 1" x 6" x 96" (Horizontal)
- 1" Spacing between Pickets
- Treated True 4" x 4" Post
- 1" x 6" Cap and Trim



CEDAR OR TREATED PICKET WITH DOG EARED TOP

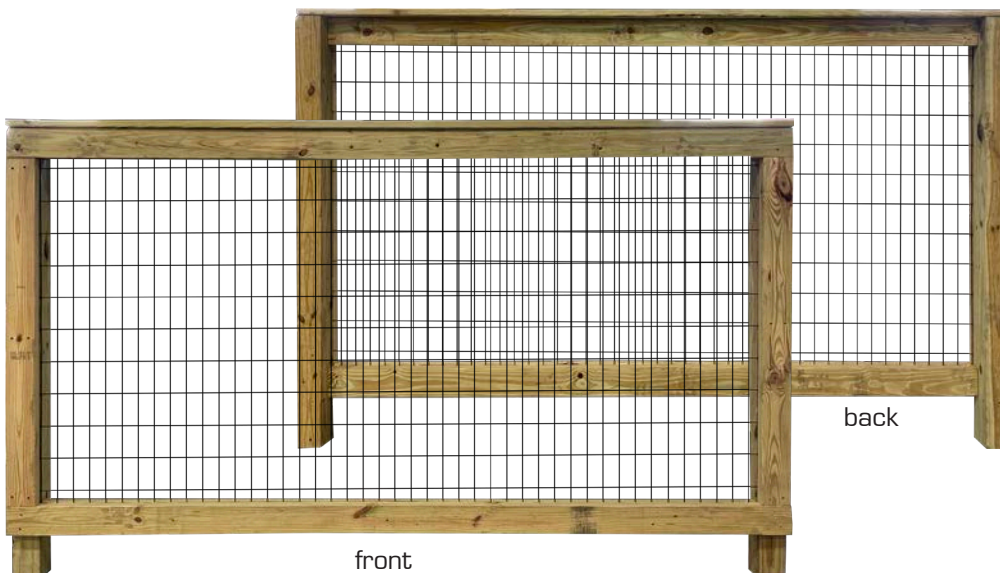
- 48" to top of Picket Plus Standard 2" off grade
- $\frac{3}{4}$ " x 3 $\frac{1}{2}$ " x 48" Cedar or Treated Pickets
- 2 $\frac{1}{2}$ " Picket Spacing
- Cedar or Treated Rails 2" x 4" x 8"
- Treated True 4" x 4" Post with Gothic Top

WOOD YARD FENCING



HEMLOCK YARD FENCE WITH CAP & TRIM

- 48" Plus Standard 2" off grade
- Hemlock Boards 1" x 6"
- Treated 2" x 4" x 96" Support Rails
- Treated True 4" x 4" Post
- Black 4' high Riverdale Rolled Wire 2" x 4" Holes
- 1" x 6" Cap and Trim



TREATED YARD FENCE FRAMED WITH CAP & TRIM

- 48" Plus Standard 2" off grade
- Treated 2" x 4" Framed Boards
- Treated 2" x 4" x 96" Support Rails
- Treated 4" x 4" Post
- Black 4' high Riverdale Rolled Wire 2" x 4" Holes
- Treated Deck Board 1" x 6" Cap

WOOD SPLIT RAIL FENCING



2, 3 & 4 RAIL SPLIT RAIL FENCE

- 36"/48"/60" Height
- 3" x 5" Treated or Locust Split Rail Post
- Treated/ Hemlock or Oak Rails
- 10' post spacing
- Option for Riverdale Rolled wire

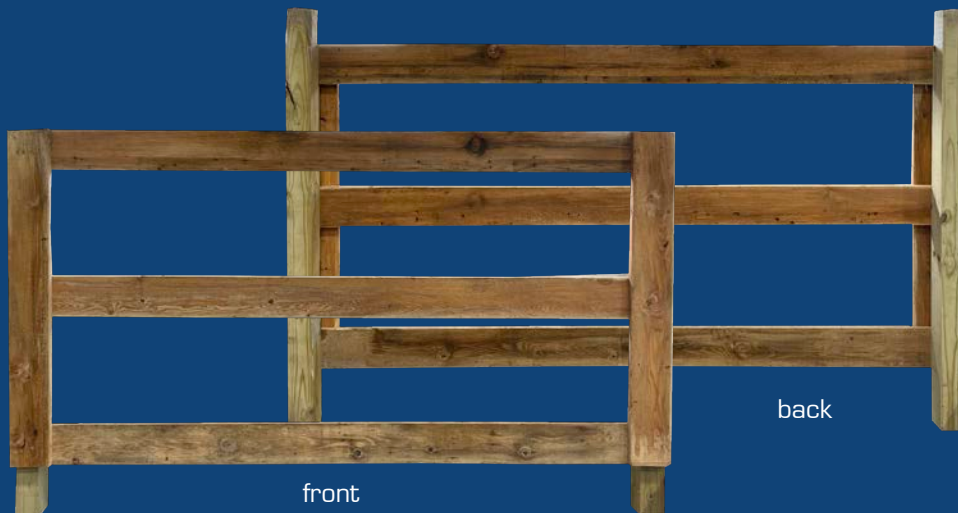


2, 3 & 4 RAIL SLIP BOARD FENCE

- 36"/48"/60" Height
- 3" x 5" Treated or Locust Slip Board Post
- Treated or Hemlock Boards
- 10' post spacing
- Option for Riverdale Rolled wire



WOOD HORSE FENCING



2, 3 & 4 RAIL HORSE FENCE

- 36"/48"/60" Height
- Treated True 4" x 4" Post
- 1" x 6" Treated or Hemlock Boards
- 8' post spacing
- Option for Riverdale Rolled wire
- Option for Cap and Trim

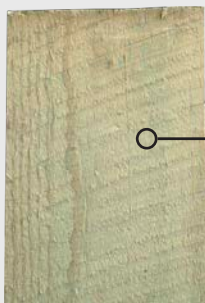


CROSSBUCK HORSE FENCE

- 48" Height
- Treated True 4" x 4" Post
- 1" x 6" Treated or Hemlock Boards
- 8' post spacing
- Option for Riverdale Rolled wire
- Option for Cap and Trim

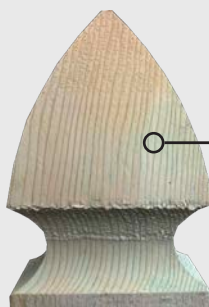
OPTIONS

POSTS



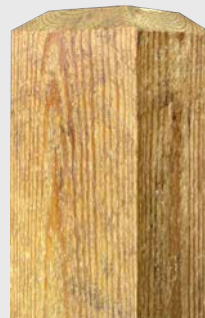
**STANDARD
POST TOP**

Available in:
4x4, 5x5 &
6x6 sizes



**TREATED
GOTHIC
POST TOP**

Available in:
4x4, 5x5 &
6x6 sizes



**CHAMFERED
POST TOP**

Available in:
4x4, 5x5 &
6x6 sizes

CAPS

**COOPER
WEST CREEK
POST CAP**



Available in: 4x4, 5x5 & 6x6 sizes

**FEDERAL
PYRAMID
POST CAP**



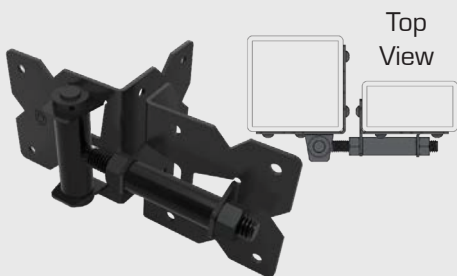
Available in: 4x4, 5x5 & 6x6 sizes

**GREAT
POINT FLAT
POST CAP**

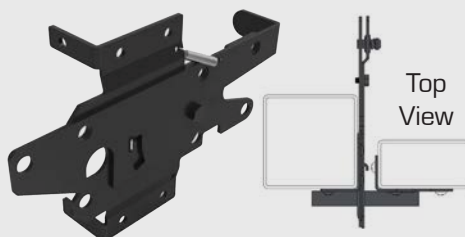


Available in: 4x4, 5x5 & 6x6 sizes

HINGE & LATCHES



**STAINLESS STEEL
SELF CLOSING HINGE**



**STAINLESS STEEL
2-WAY LATCH**



**2-BOLT
DROP
ROD**



**MAGNA
LATCH**



**GATE
HANDLE**



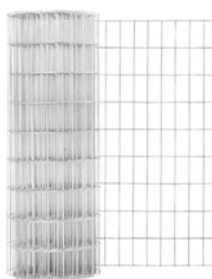
**GATE
STOP**

ROLLED WIRE



**VINYL COATED
BLACK
GALVANIZED
ROLLED WIRE**

2"x4" Holes
Available in
Heights of:
4', 5', 7', 8'



**GALVANIZED
ROLLED WIRE**

2"x4" Holes
Available in
Heights of:
4', 5', 7', 8'



**VINYL COATED
GREEN
GALVANIZED
ROLLED WIRE**

2"x4" Holes
Available in
Heights of:
4', 5', 7', 8'

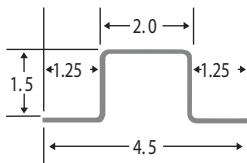
ALUMINUM FRAMED GATES

POLY ENTERPRISES - CUSTOM WELDED



POSTMASTER PLUS - FENCE POST SYSTEM

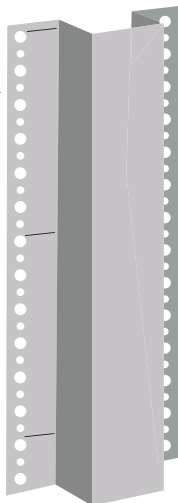
Line Post



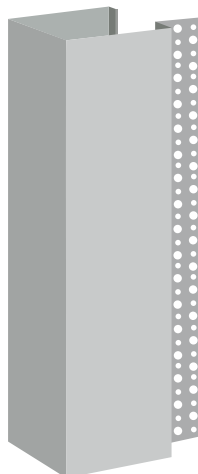
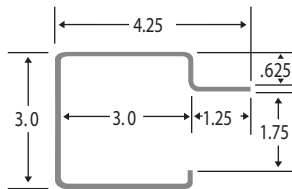
Alternating hole pattern for #8/#9 countersunk deck screws or 1/4 in. lag screws.

#8/#9 countersunk deck screws are recommended for flush installation to the post.

All posts available in: 7'6", 8', 9', 10' & 12' lengths.



Gate Post



CUSTOMER CHECKLIST



INITIAL PLANNING PHASE

- ☐ Property Line Locations and Surveys?
- ☐ Zoning and Local Codes?
- ☐ Building Permits?
- ☐ Private Underground Utilities?
- ☐ Site Access

DESIGN PHASE

- ☐ What purpose will the fence serve? Privacy? Keeping kids or pets in? Pool Fence?
- ☐ Fence material? Vinyl, aluminum, chain link, wood?
- ☐ Fence Height?
- ☐ Color of Fence?

- ☐ Gates and Gate Width?
- ☐ Gates Hardware?
- ☐ Fence style? Fence layout?

WHY CHOOSE POLY ENTERPRISES

- ☐ 5 year labor warranty*
- ☐ Lifetime material warranty (vinyl & aluminum)
- ☐ Office and showroom
- ☐ Professionally trained installation crews
- ☐ Largest and most trusted local residential fence company located in the Mohawk Valley
- ☐ Family owned and operated
- ☐ Fully insured
- ☐ 100% customer satisfaction guaranteed
- ☐ Customer referrals available

- ☐ Standard 36" below grade concrete fence post footers
- ☐ Routed aluminum and vinyl fence systems eliminating unsightly exposed fasteners
- ☐ Premium fence materials used for every fence install

QUESTIONS TO ASK YOUR FENCING CONTRACTOR

- ☐ Warranty?
- ☐ Showroom/Display/Office?
- ☐ Company reviews online?
- ☐ Referrals?
- ☐ Insurance?
- ☐ Quality of Material used?



POLY
ENTERPRISES
The Fencing Company

(315) 843-4049 | www.polyenterprises.net

To find inspiration for your home go to our website to view our updated project gallery. We've got plenty of tips on pool fence maintenance and product selection in our blog too, and we're updating when we can; when we're not building fences, that is.

We're really proud of our service, and our people. If you have any questions, please don't hesitate to contact us. We look forward to hearing from you!

Follow us



Review us

